



## Bartholomew Villas

Kentish Town London NW5 2LL

£1,850,000

An exceptional three/four bedroom period end-terraced house, perfectly situated on the west side of one of the very finest residential addresses in NW5.

Arranged over three storeys plus a small basement, the property is presented excellent decorative order throughout, retaining a good deal of period charm and detail, including original working shutters, decorative plasterwork, fireplaces, and stained glass.

On the ground floor, a wide hallway leads to a spacious front reception, which opens onto a modern eat-in kitchen with further large pantry.

On the first floor are two very good size bedrooms and on the top floor a further very good double, a study and family bathroom/wc. There is a small basement, with a further wc.

The adjacent houses to both sides have substantial two-storey rear extensions, so there may well be the potential to extend, subject to the requisite permissions.

To the rear is a very tranquil and mature west-facing garden, which overlooks the gardens on Patshull Rd.

Bartholomew Villas is a most desirable, leafy residential side-turning, a short distance from Camden School for Girls and within a minutes' walk of the amenities of Kentish Town Road. The Collège Français Bilingue de Londres, and the Underground are both very close by.

- Fabulous end-terraced period house
- Three good double bedrooms plus study
- Open plan reception
- Modern fitted kitchen
- Pantry
- Modern family bathroom/wc
- Numerous charming period features
- Basement with guest wc
- Perfect, leafy residential location
- Mature west-facing garden

### Viewing

Please contact our Kentish Town Sales Office on 0207 482 4488 if you wish to arrange a viewing appointment for this property or require further information.



3



1

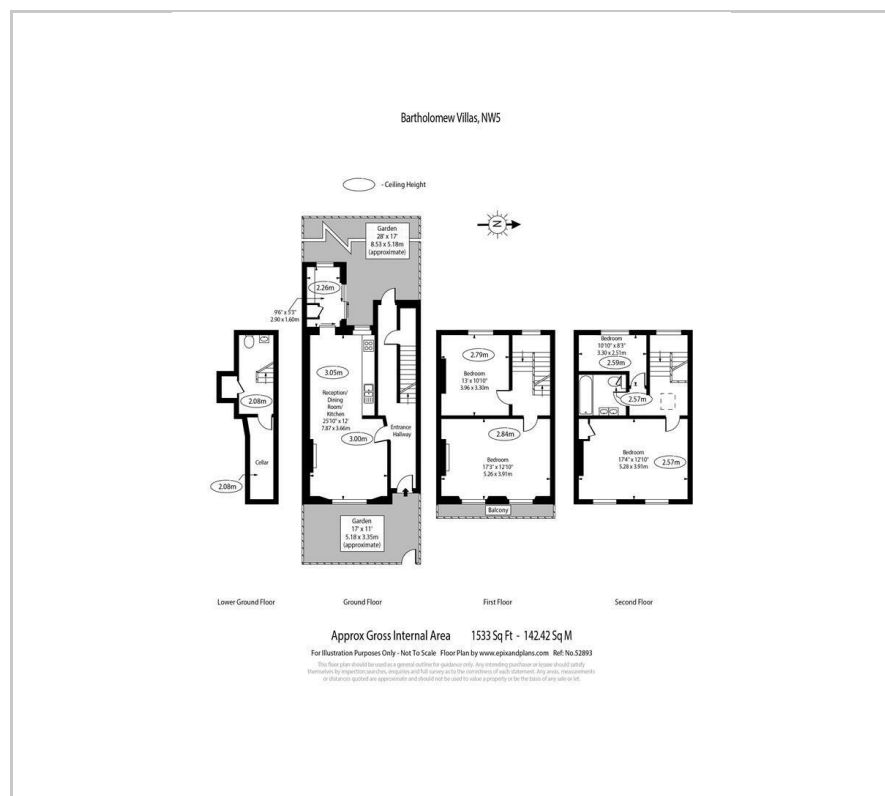


1





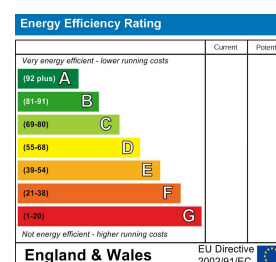
## Floor Plan



## Area Map



### Energy Efficiency Graph



These particulars, whilst believed to be accurate are set out as a general outline only for guidance and do not constitute any part of an offer or contract. Intending purchasers should not rely on them as statements of representation of fact, but must satisfy themselves by inspection or otherwise as to their accuracy. No person in this firm's employment has the authority to make or give any representation or warranty in respect of the property.

265/267 Kentish Town Road, Kentish Town, London, NW5 2TP  
Tel: 0207 482 4488 Email: [Residential@salter-rex.co.uk](mailto:Residential@salter-rex.co.uk) [salter-rex.co.uk](http://salter-rex.co.uk)