



, London, NW3 2LG

Offers Over £1,850,000



93 Savernake Road



Description

Offered for sale for the first time in almost 100 years, a 6 bedroom Victorian mid-terrace house, situated in a prime, leafy residential turning, within easy reach of South End Green and moments from the entrance to Hampstead Heath.

Arranged over three principal floors and attic space, the property offers approximately 2500 square feet of accommodation and a 50' south-facing garden, affording the opportunity to create an exceptional family home with scope to extend to the rear and into the side return (subject to necessary consents).

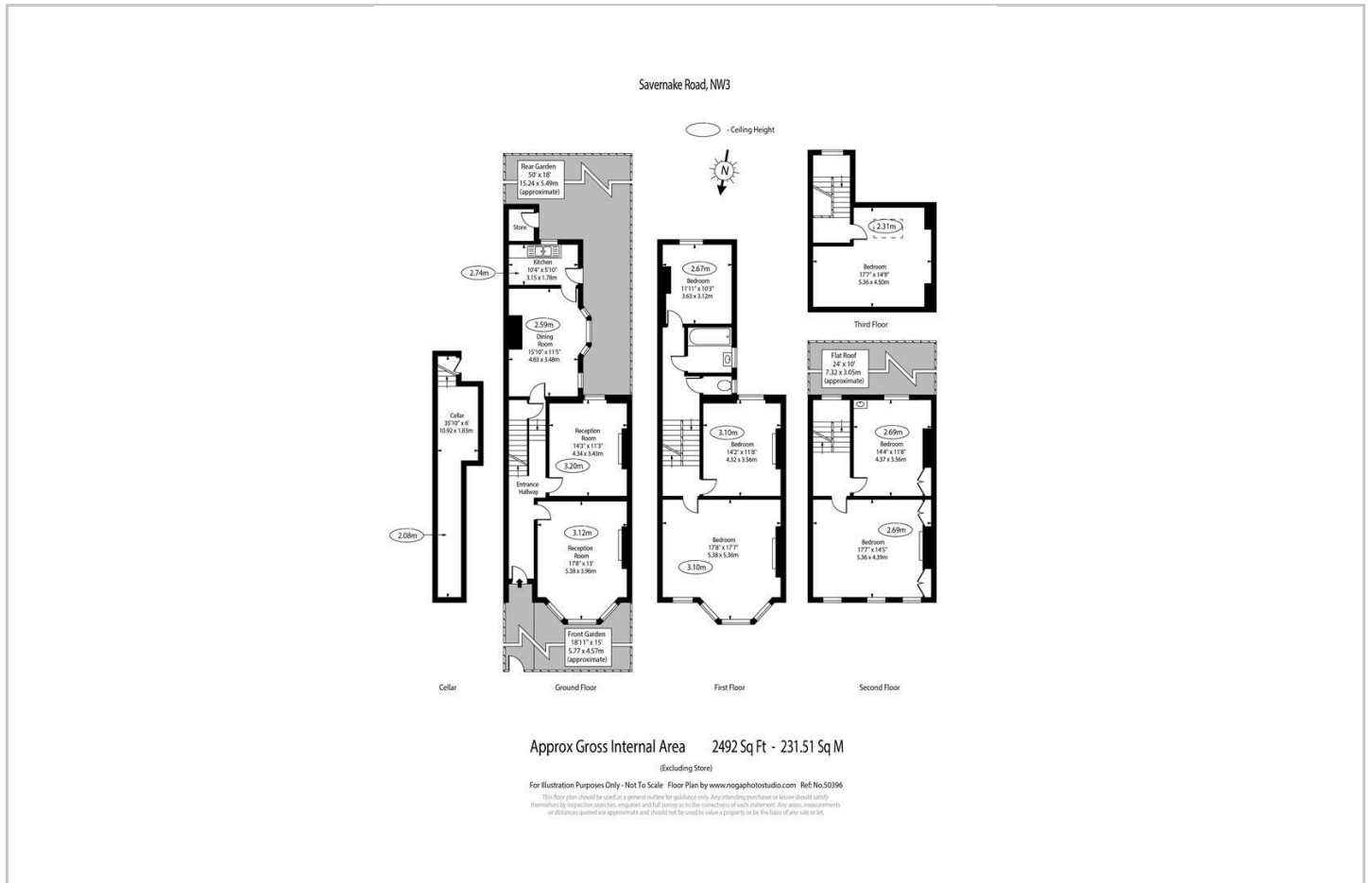
Savernake Road is located within easy reach of the shops and cafés in South End Green as well as the wide range of amenities at nearby Belsize Park and Hampstead High Street, with the property itself located directly opposite the footbridge to the southern entrance to Hampstead Heath and Parliament Hill Fields Lido. Belsize Park (Northern Line Zone 2) Underground Station is only a 15 minute walk and Gospel Oak Overground Station approximately only 7 minutes', providing excellent transport links to the City and West End.

- 4 STOREY VICTORIAN HOUSE
- 3 RECEPTION ROOMS
- CELLAR STORAGE
- OPPOSITE THE ENTRANCE TO HAMPSTEAD HEATH
- 6 BEDROOMS
- SOUTH-FACING GARDEN
- SCOPE TO DEVELOP AND EXTEND (STPP)
- NO ONWARD CHAIN

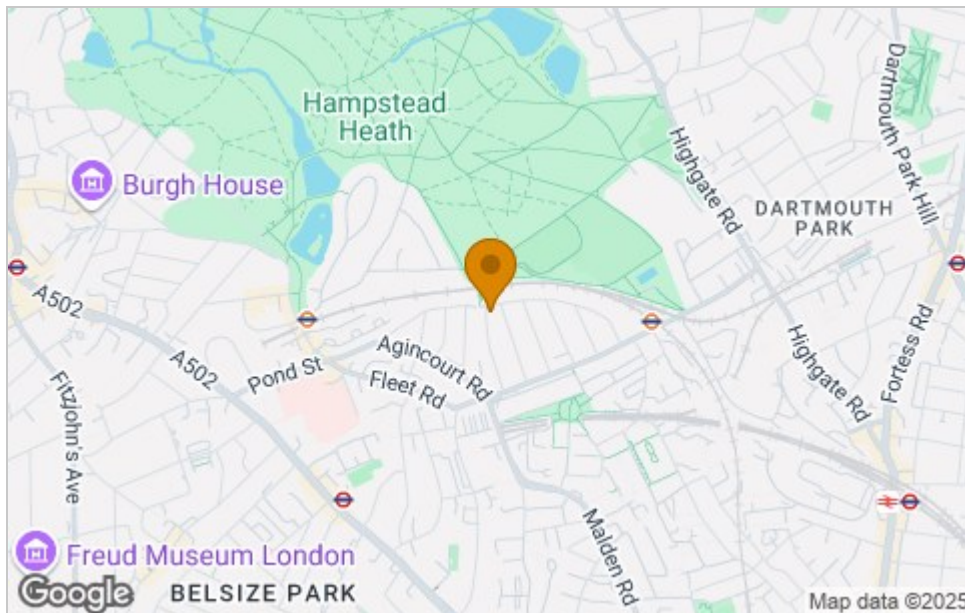




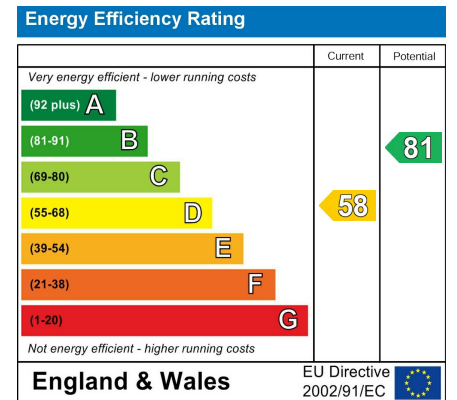
Floor Plan



Area Map



Energy Efficiency Graph



Viewing

Please contact our Hampstead Sales Office on 020 7431 1881 if you wish to arrange a viewing appointment for this property or require further information.

These particulars, whilst believed to be accurate are set out as a general outline only for guidance and do not constitute any part of an offer or contract. Intending purchasers should not rely on them as statements of representation of fact, but must satisfy themselves by inspection or otherwise as to their accuracy. No person in this firm's employment has the authority to make or give any representation or warranty in respect of the property.