



## Wolsey Mews

London NW5 2DX

£2,250 Per Month

An outstanding and beautifully presented one bedroom mews house in a peaceful location in the heart of Kentish Town only moments from fantastic transport links and amenities.

The property comprises: E/hall, double bedroom with fitted wardrobes and luxury fitted bathroom on the ground floor, stairs leading to bright living room open plan with modern fully fitted kitchen with integrated appliances. The property has been converted from an old Victorian warehouse and has been finished to an extremely high standard with a lovely contemporary design.

Wolsey Mews is conveniently situated within a 5 minute walk of the tube and Thameslink and has a broad range of shops and dining/entertainment options on the doorstep.

Available 8th August

- Converted from Victorian warehouse
- One bedroom house
- Bright reception
- Modern fully fitted open plan kitchen
- Luxury bathroom
- Excellent location
- Council tax band D
- Deposit of 5 weeks rent
- Long term let

### Viewing

Please contact our Kentish Town Lettings Office on 0207 482 4488

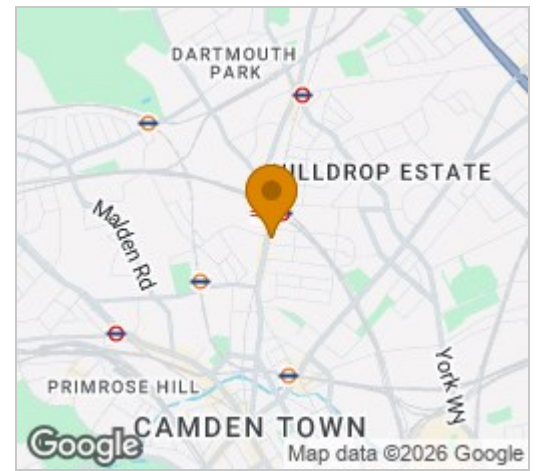
if you wish to arrange a viewing appointment for this property or require further information



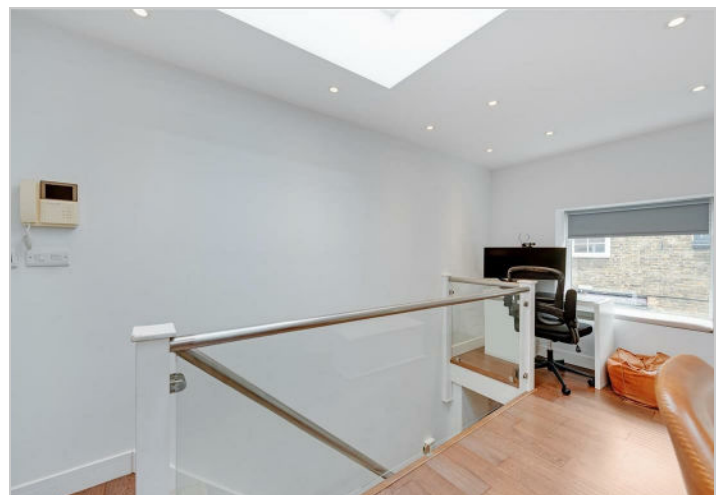
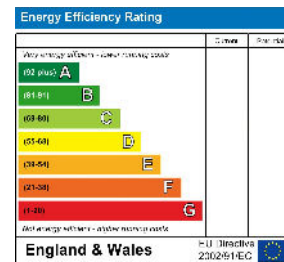
## Floor Plan



## Area Map



## Energy Efficiency Graph



These particulars, whilst believed to be accurate are set out as a general outline only for guidance and do not constitute any part of an offer or contract. Intending purchasers should not rely on them as statements of representation of fact, but must satisfy themselves by inspection or otherwise as to their accuracy. No person in this firm's employment has the authority to make or give any representation or warranty in respect of the property.