



Hampstead Heath, London, NW3 2NS

Asking Price £2,750,000



6



3



2



D

1A Lisburne Road



Description

Located in the charming area of South End Green, adjacent to Hampstead Heath, this splendid double-fronted end-of-terrace Victorian house on Lisburne Road is a rare find, and offers a perfect blend of classic elegance and modern living. Spanning an impressive 2,364 square feet, this spacious residence is ideal for families seeking both comfort and style. The Victorian architecture of the house adds a touch of historical charm with period features throughout. The high ceilings and large windows create a bright and airy atmosphere, while the characterful details throughout the home provide a sense of warmth and individuality.

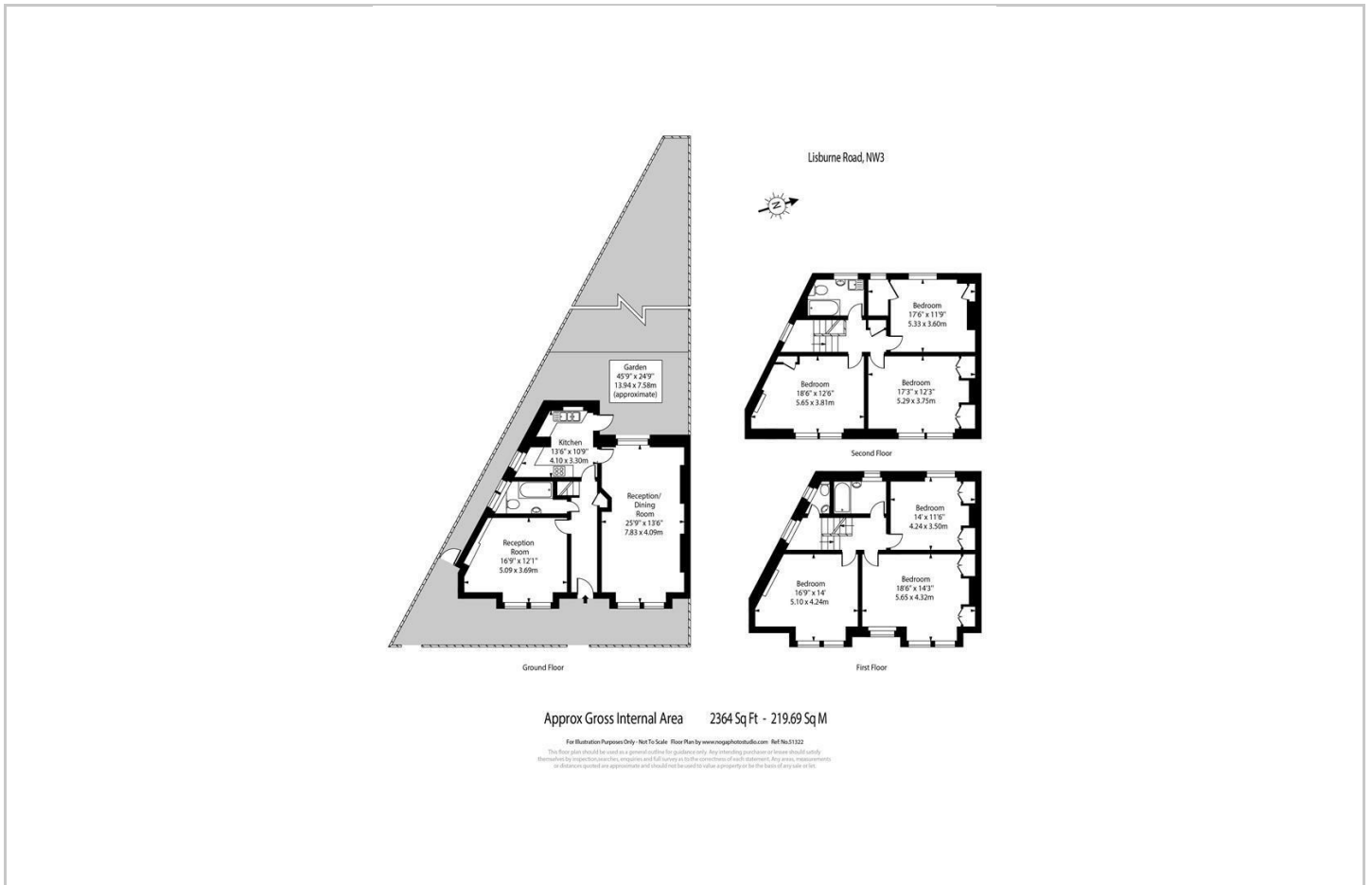
Either side of the entrance hall, with its original tiled floor and ornate cornicing, you are greeted by two inviting reception rooms, the main reception extending to the full depth of the house. The generous layout allows for a seamless flow between spaces, enhancing the overall sense of openness and light. The house further benefits from six well-proportioned double bedrooms, three bathrooms, and a spacious kitchen/diner which leads out onto a west-facing garden with its own side entrance. There is also potential scope to extend into the loft space and to the rear (subject to planning consents).

- Double-Fronted House
- 6 Double Bedrooms
- Large Kitchen
- West Facing Garden With Side Entrance
- No Onward Chain
- End-of-Terrace
- 2 Reception Rooms
- 3 Bathrooms
- Close To Hampstead Heath

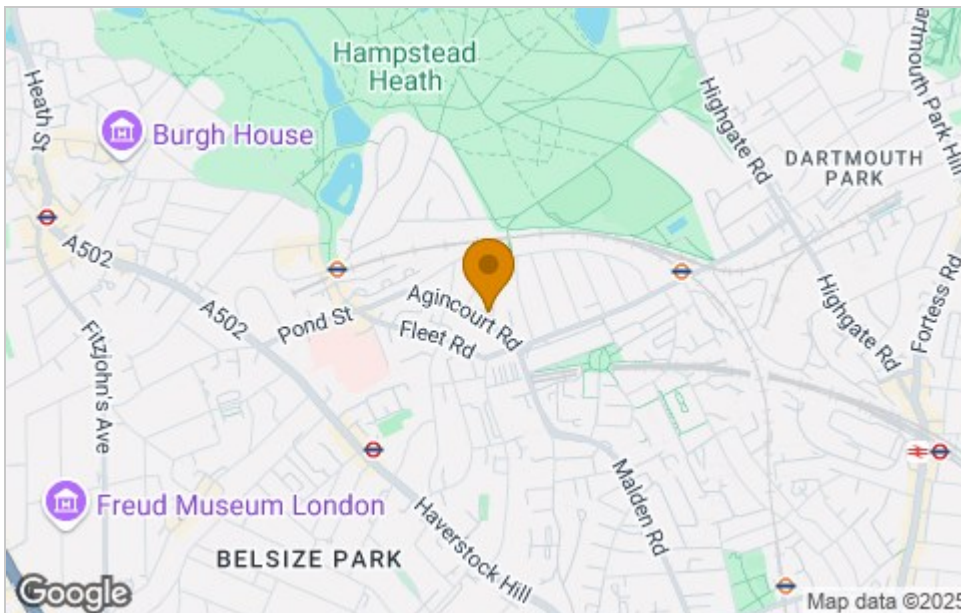




Floor Plan



Area Map



Viewing

Please contact our Hampstead Sales Office on 020 7431 1881 if you wish to arrange a viewing appointment for this property or require further information.

These particulars, whilst believed to be accurate are set out as a general outline only for guidance and do not constitute any part of an offer or contract. Intending purchasers should not rely on them as statements of representation of fact, but must satisfy themselves by inspection or otherwise as to their accuracy. No person in this firm's employment has the authority to make or give any representation or warranty in respect of the property.

47 South End Road, Hampstead, London, NW3 2QB
Tel: 020 7431 1881 Email: hampstead@salter-rex.co.uk salter-rex.co.uk

Energy Efficiency Graph

