



Gloucester Avenue

Camden London NW1 7BQ

£845,000

An exceptionally bright and spacious lateral apartment, arranged over the fourth floor of a landmark modern development situated on the north side of Gloucester Avenue, on the Camden/Primrose Hill border.

Offering a very generous 1231 square feet (114 square metres) of accommodation, well presented but with scope for further improvement, the property features a particularly impressive reception, with a very pleasant open south-westerly aspect, and a fabulous master bedroom with a range of fitted storage and large ensuite. The kitchen is modern, with integrated appliances and there are two further bedrooms, a second bathroom and a guest cloakroom.

In addition to the private underground garage, on-site porter and well-tended communal gardens, there is the benefit of a passenger lift.

Darwin Court is ideally situated to the West of Camden, within a short walking distance of Regent's Park, Primrose Hill, Chalk Farm and the bohemian attractions of Camden Town. The nearest Underground is at Camden Town (Northern Line)

- Exceptionally spacious apartment
- Very large reception
- Stately master bedroom suite
- Two further bedrooms
- Family bathroom/wc
- Guest cloakroom
- Modern kitchen with appliances
- Private underground garage
- On-site porter
- Communal gardens

Viewing

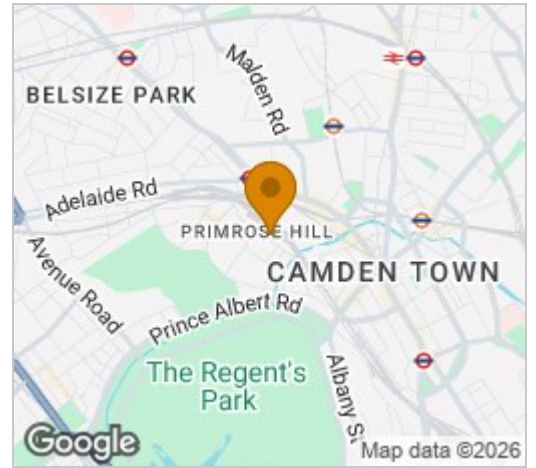
Please contact our Kentish Town Sales Office on 0207 482 4488 if you wish to arrange a viewing appointment for this property or require further information.



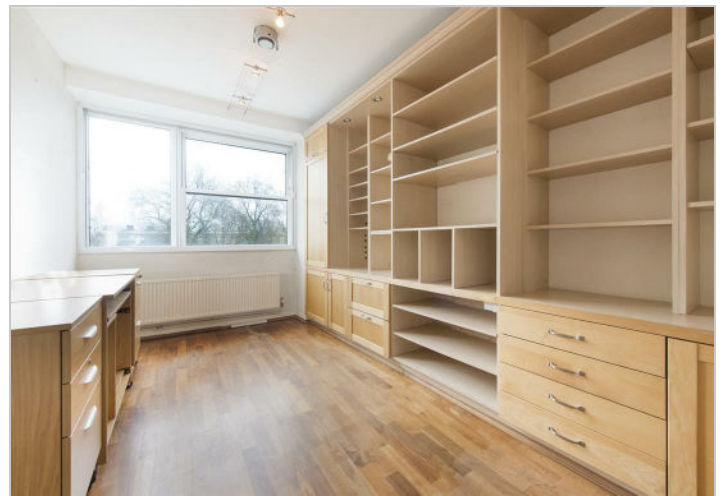
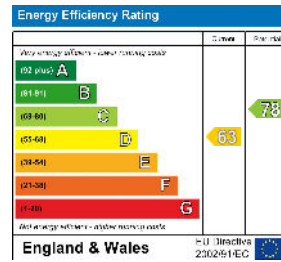
Floor Plan



Area Map



Energy Efficiency Graph



These particulars, whilst believed to be accurate are set out as a general outline only for guidance and do not constitute any part of an offer or contract. Intending purchasers should not rely on them as statements of representation of fact, but must satisfy themselves by inspection or otherwise as to their accuracy. No person in this firm's employment has the authority to make or give any representation or warranty in respect of the property.