



Patshull Road, London, NW5 2LE

£2,175,000

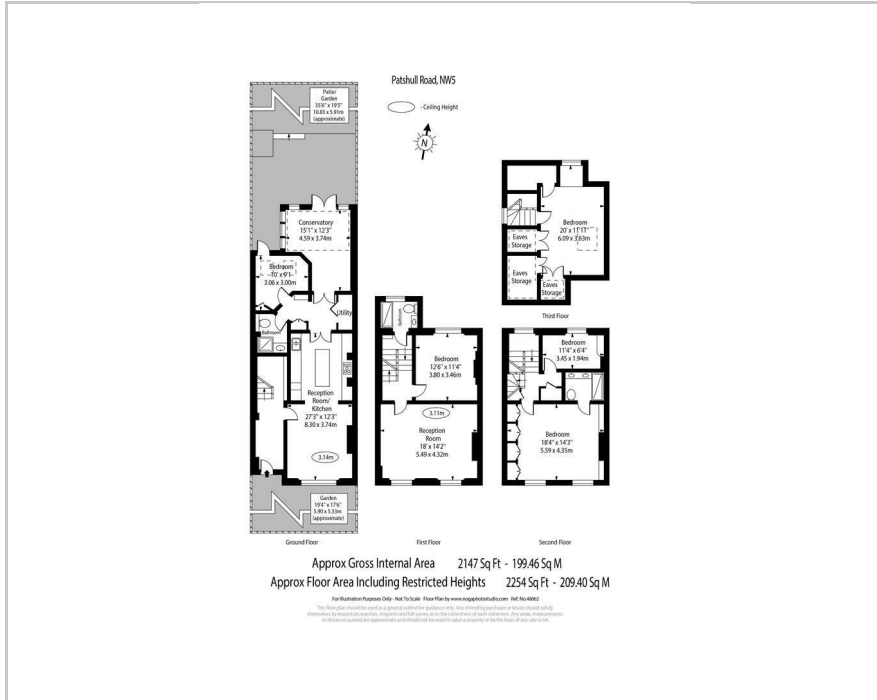
5

3

3

E

Floor Plan



Accommodation

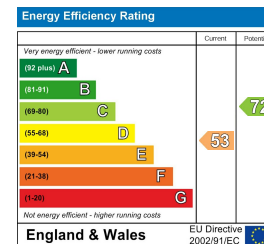
- Fabulous end-terrace Victorian villa
- Stately master bedroom with en-suite
- Four further receptions
- Two further bathrooms
- Two good-size receptions
- Conservatory
- Modern kitchen with island
- Excellent decorative order
- Very good size garden
- Perfect location



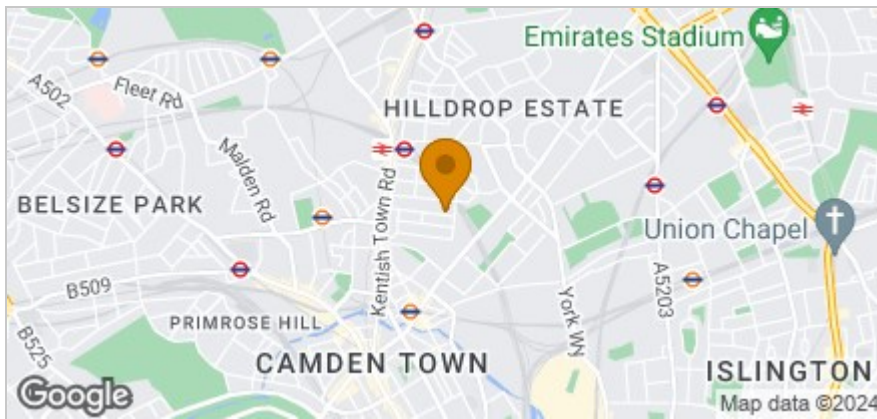
Viewing

Please contact our Kentish Town Sales Office on 0207 482 4488 if you wish to arrange a viewing appointment for this property or require further information.

Energy Efficiency Graph



Area Map



These particulars, whilst believed to be accurate are set out as a general outline only for guidance and do not constitute any part of an offer or contract. Intending purchasers should not rely on them as statements of representation of fact, but must satisfy themselves by inspection or otherwise as to their accuracy. No person in this firm's employment has the authority to make or give any representation or warranty in respect of the property.

265/267 Kentish Town Road, Kentish Town, London, NW5 2TP
 Tel: 0207 482 4488 Email: Residential@salter-rex.co.uk salter-rex.co.uk