



Lewis Street

London NW1 8QT

£1,200,000

A charming two storey semi detached cottage, tucked away in a quiet residential cul-de-sac, centrally and conveniently situated within easy reach of Chalk Farm Underground.

Offering spacious and conveniently arranged accommodation, the property is well presented throughout and benefits from many attractive period features. In particular, a spacious kitchen opens onto an extended dining room which overlooks the courtyard-style garden. There are three bedrooms, one leading on to a south-facing first floor terrace.

Lewis Street is centrally and conveniently situated for the vibrant cultural delights of Camden, with its vast selection of independent shops, restaurants and bars. The local amenities of Kentish Town including the refurbished Victorian swimming baths, local shops on the High Street, the outstanding Holy Trinity and St Silas C.O.E primary school and the Collège Français Bilingue de Londres on Holmes Road are also moments away.

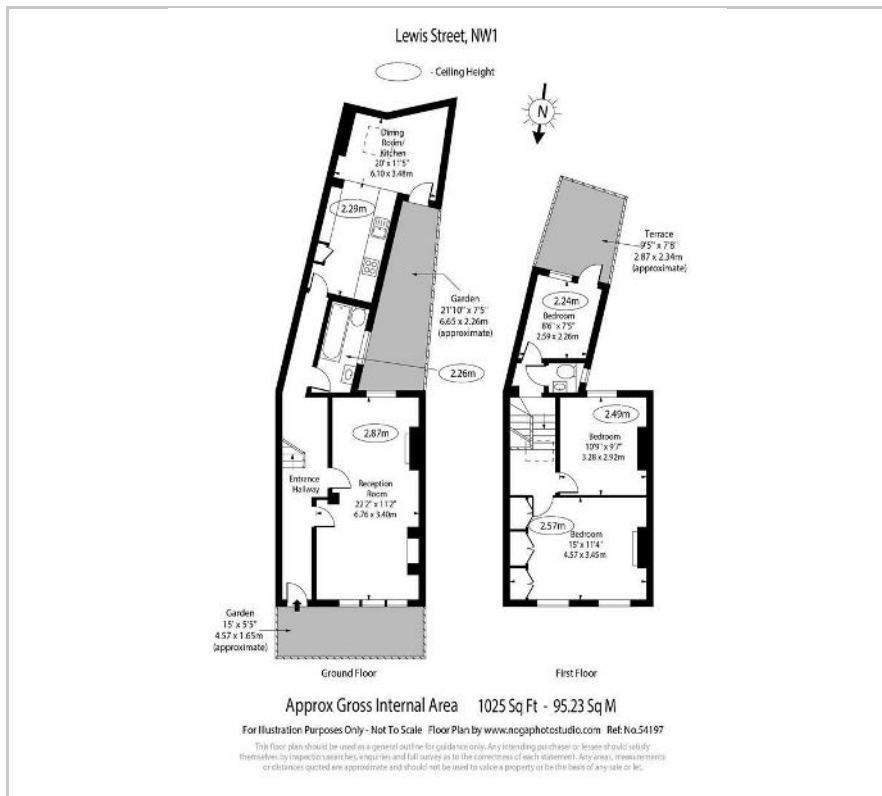
- Victorian semi-detached cottage
- Three bedrooms
- Double reception
- Kitchen opening on to extended dining room
- Courtyard style garden
- First-floor terrace
- Family bathroom/wc plus further wc
- Tranquil residential location
- Excellent decorative order
- Close to outstanding schools

Viewing

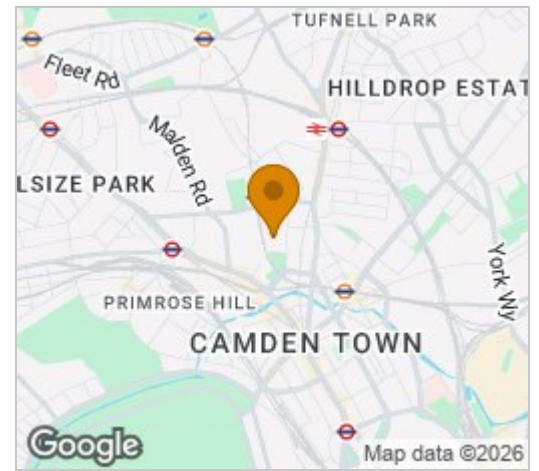
Please contact our Kentish Town Sales Office on 0207 482 4488 if you wish to arrange a viewing appointment for this property or require further information.



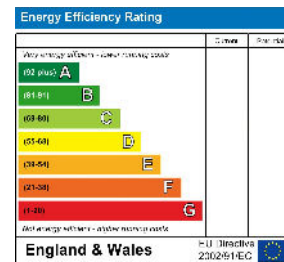
Floor Plan



Area Map



Energy Efficiency Graph



These particulars, whilst believed to be accurate are set out as a general outline only for guidance and do not constitute any part of an offer or contract. Intending purchasers should not rely on them as statements of representation of fact, but must satisfy themselves by inspection or otherwise as to their accuracy. No person in this firm's employment has the authority to make or give any representation or warranty in respect of the property.