



Lady Margaret Road

Kentish Town NW5 2XS

£699,950

SOLD OFF-MARKET

A very well presented two double bedroom apartment with balcony and terrace occupying the first floor of an impressive and well maintained period house, ideally situated, on a prime street in Kentish Town close to excellent transport links and amenities.

Offering 680 square feet of well-planned and immaculately-presented accommodation, the property benefits from very good ceiling heights and many attractive period features. To the rear is a good size private terrace, with open aspects to the east and south.

Lady Margaret Road is a wide, tree-lined street in a much sought after neighbourhood only moments from the exceptional transport links of Kentish Town (Northern line, overground and Thameslink) offering very easy access to the City and West End. The wide array of shopping and entertainment options are all on your doorstep and the open spaces of Hampstead Heath with all its leisure options is a short walk away.

- Two double bedroom apartment
- Period conversion
- Balcony and roof terrace
- Well-appointed kitchen with appliances
- Generous reception
- High ceilings and large windows
- Superb location
- Council Tax Band D
- Chain free sale
- Prime residential location

Viewing

Please contact our Kentish Town Lettings Office on 0207 482 4488

if you wish to arrange a viewing appointment for this property or require further information



2



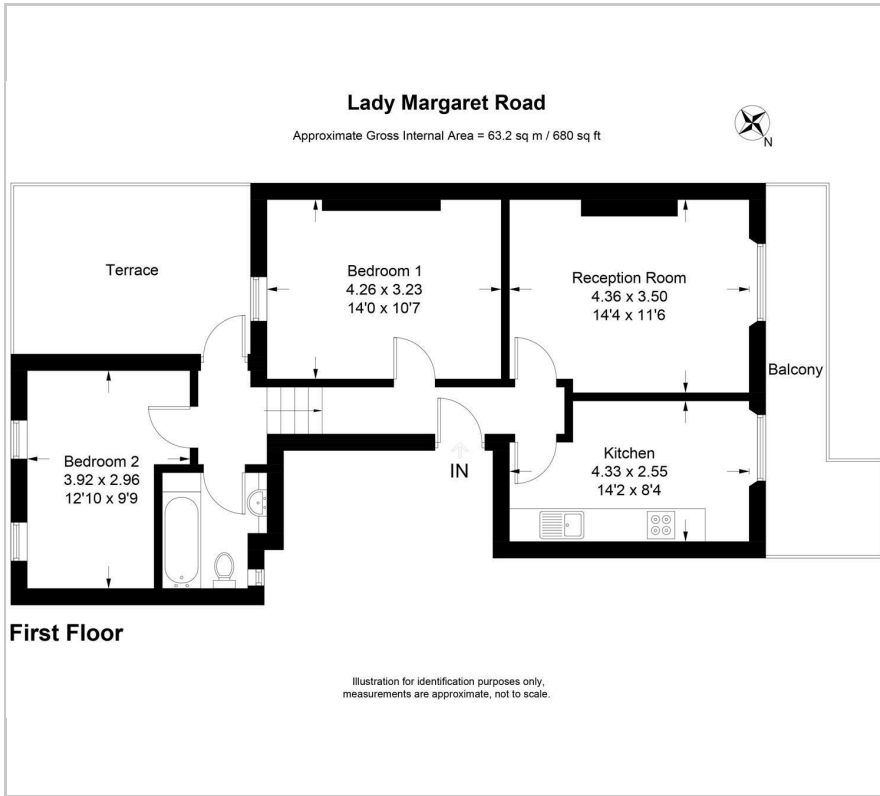
1



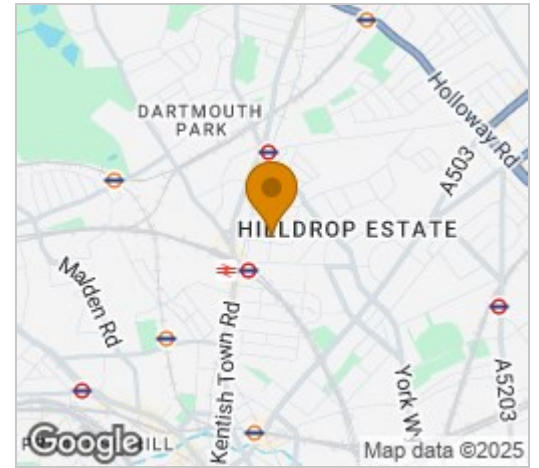
1



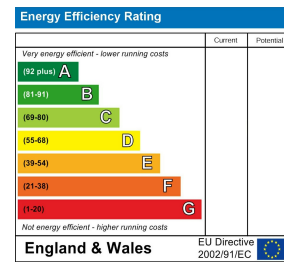
Floor Plan



Area Map



Energy Efficiency Graph



These particulars, whilst believed to be accurate are set out as a general outline only for guidance and do not constitute any part of an offer or contract. Intending purchasers should not rely on them as statements of representation of fact, but must satisfy themselves by inspection or otherwise as to their accuracy. No person in this firm's employment has the authority to make or give any representation or warranty in respect of the property.