



Parkhill Road, Belsize Park, NW3 2YT

Asking Price £975,000



# Parkhill Road, NW3 2YT



## Description

A well presented charming two bedroom garden apartment with its own private entrance, located on one of Belsize Park's premier roads.

Spanning over 840 sq ft of living space, the property comprises a large reception room, separate kitchen, two well proportioned bedrooms, family bathroom, and en-suite shower room to the second bedroom. In addition, the flat further benefits from a 16'8" x 7'10" conservatory which can be accessed from both the reception and the kitchen, and leads directly onto a beautiful private rear garden.

Parkhill Road is a highly desirable residential tree lined street, ideally located within easy reach of the vibrant shops and cafés and extensive amenities available at Belsize Park and Hampstead High Street, and less than a 10 minute walk from the footbridge leading to the southern entrance of Hampstead Heath and the popular Parliament Hill Fields Lido.

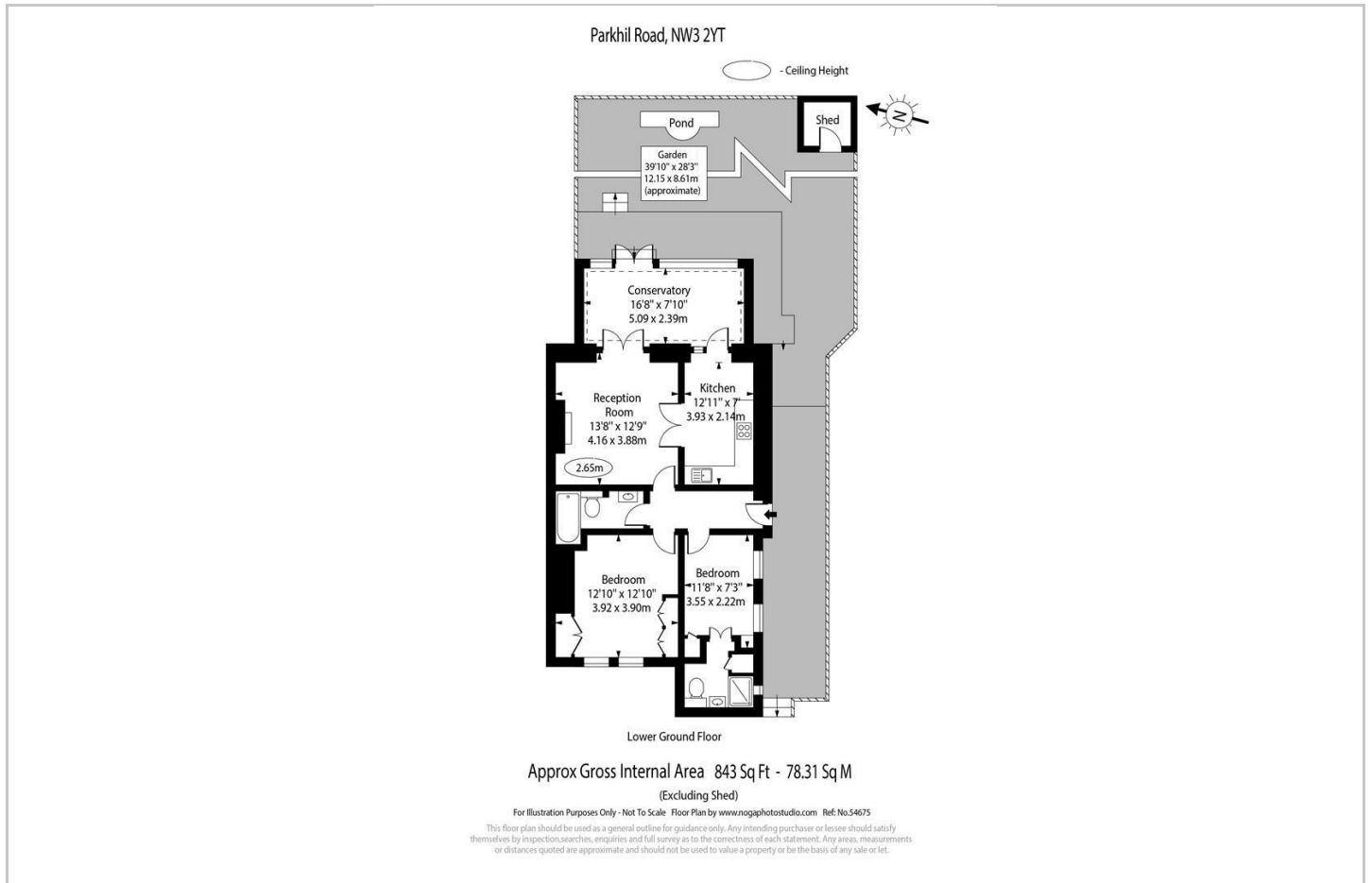
For those commuting, Belsize Park Underground Station (Northern Line, Zone 2) is just a 10-minute walk

- GARDEN FLAT
- 2 BEDROOMS
- CONSERVATORY
- WALKING DISTANCE TO HAMPSTEAD HEATH
- OWN PRIVATE ENTRANCE
- 2 BATHROOMS
- SOLE USE OF PRIVATE REAR GARDEN

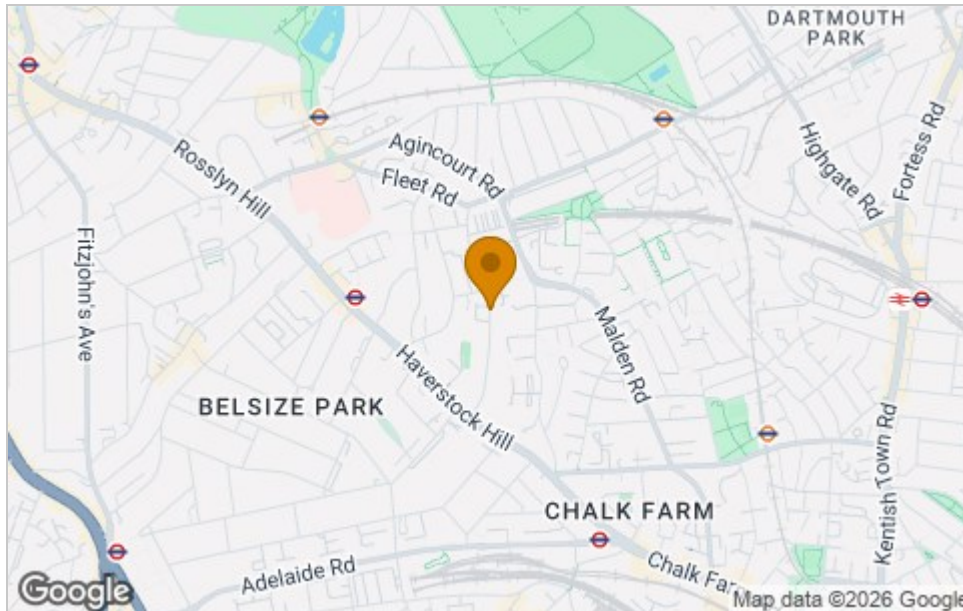




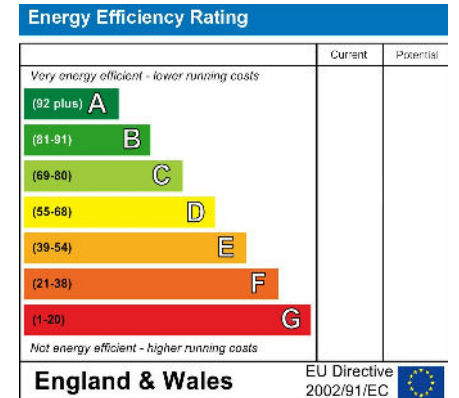
## Floor Plan



## Area Map



## Energy Efficiency Graph



## Viewing

Please contact our Hampstead Sales Office on 020 7431 1881 if you wish to arrange a viewing appointment for this property or require further information.

These particulars, whilst believed to be accurate are set out as a general outline only for guidance and do not constitute any part of an offer or contract. Intending purchasers should not rely on them as statements of representation of fact, but must satisfy themselves by inspection or otherwise as to their accuracy. No person in this firm's employment has the authority to make or give any representation or warranty in respect of the property.

47 South End Road, Hampstead, London, NW3 2QB  
Tel: 020 7431 1881 Email: [hampstead@salter-rex.co.uk](mailto:hampstead@salter-rex.co.uk) [salter-rex.co.uk](http://salter-rex.co.uk)