



175 Malden Road

Kentish Town, London, NW5 4HT

£750,000

An exceptionally fine two bedroom ground floor garden flat, very well situated on the NW5/NW3 border, within a short walk of the Heath.

Offering a generous 779 square feet of conveniently arranged accommodation, the property has been comprehensively refurbished and is presented to a very high standard throughout. In particular, the spectacular open-plan reception and kitchen is particularly impressive, opening full via a wide expanse of bi-fold glass onto a lovely south-facing garden.

Malden Rd is a popular residential location, withing easy reach of Chalk Farm (Northern Line) Underground, Overground at Gospel Oak and a range of excellent local shops at South End Green.

The rolling acres of Hampstead Heath are within a short walking distance.

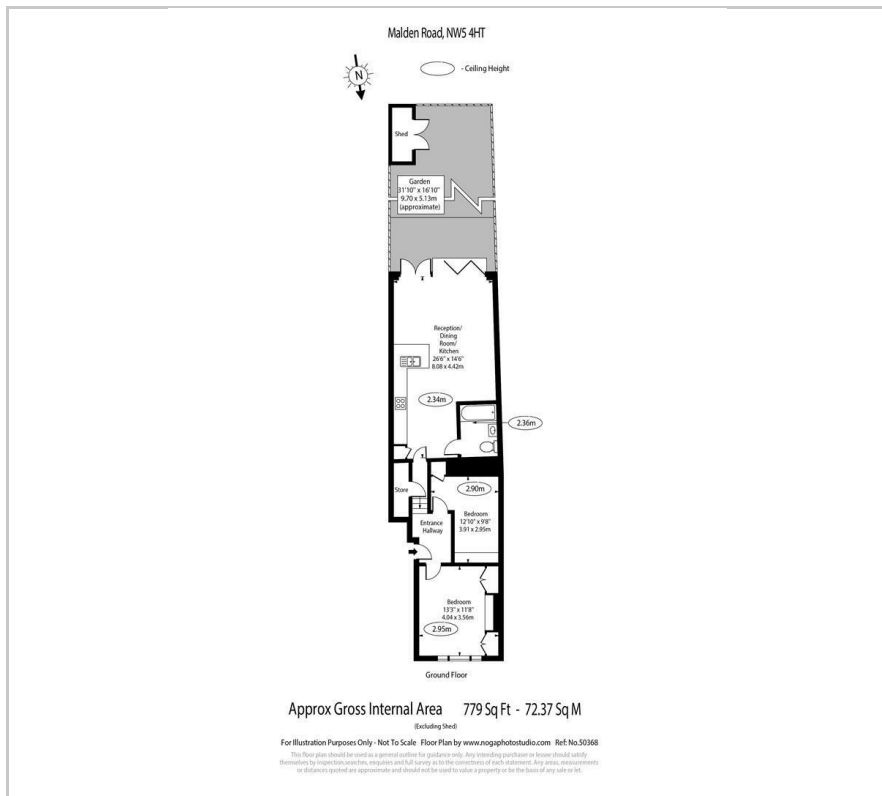
- Exceptional garden flat
- Two good bedrooms
- Stunning open-plan reception overlooking garden
- Modern kitchen with premium integrated appliances
- contemporary family bathroom/wc
- Refurbished to a very high standard
- Fabulous south-facing garden
- Share of freehold

Viewing

Please contact our Kentish Town Sales Office on 0207 482 4488 if you wish to arrange a viewing appointment for this property or require further information.



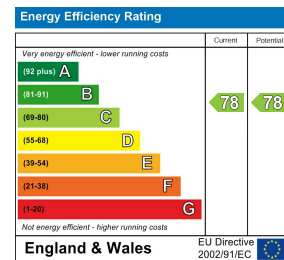
Floor Plan



Area Map



Energy Efficiency Graph



These particulars, whilst believed to be accurate are set out as a general outline only for guidance and do not constitute any part of an offer or contract. Intending purchasers should not rely on them as statements of representation of fact, but must satisfy themselves by inspection or otherwise as to their accuracy. No person in this firm's employment has the authority to make or give any representation or warranty in respect of the property.

265/267 Kentish Town Road, Kentish Town, London, NW5 2TP
 Tel: 0207 482 4488 Email: Residential@salter-rex.co.uk salter-rex.co.uk